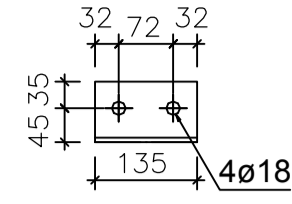
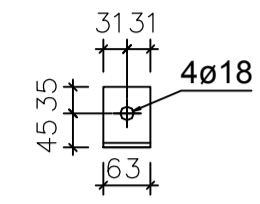


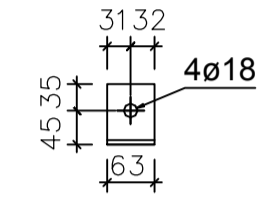
72x L80X65X6x135 **1000**
1:10 S355J2G3



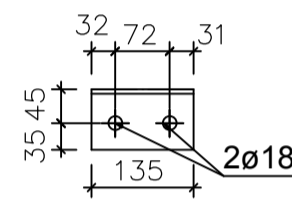
24x L80X65X6x63 **1001**
1:10 S355J2G3



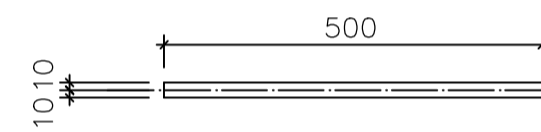
24x L80X65X6x63 **1002**
1:10 S355J2G3



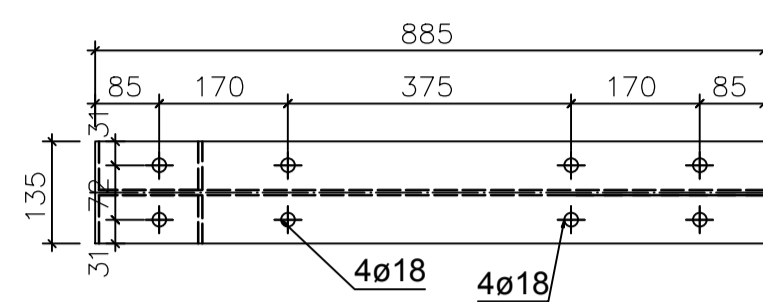
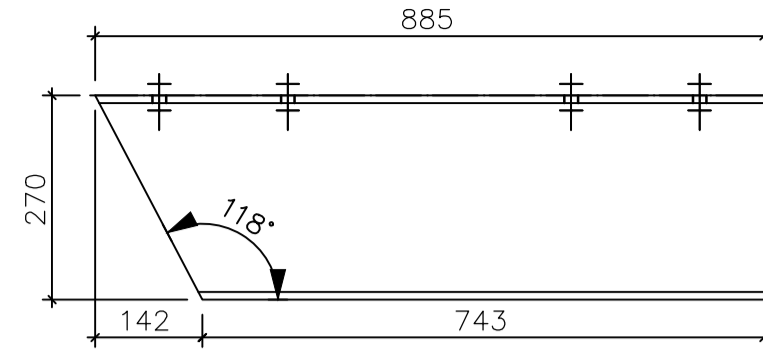
22x L80X65X6x135 **1003**
1:10 S355J2G3



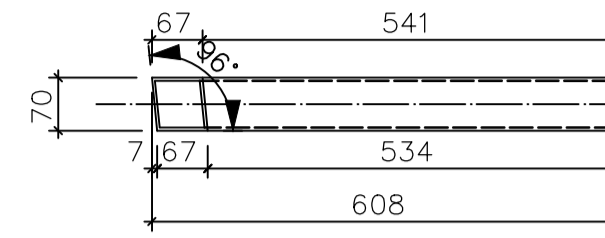
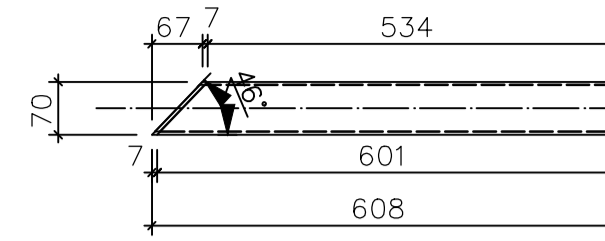
18x RD20x500 **1004**
1:10 S355J2G3



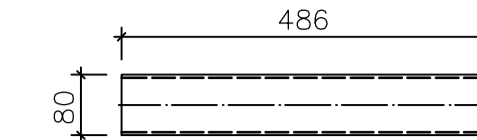
10x IPE270x885 **1010**
1:10 S355J2G3



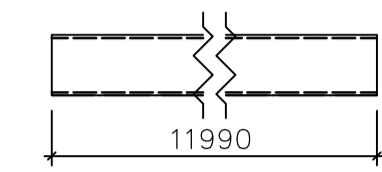
3x RHS70x4x608 **1020**
1:10 S355J2G3



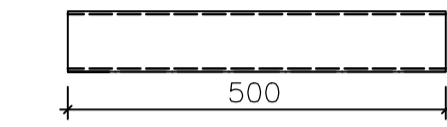
18x RHS80x4x486 **1005**
1:10 S355J2G3



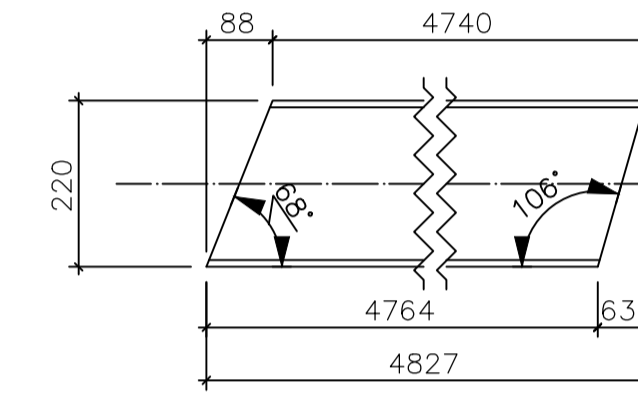
12x RHS80x4x11990 **1006**
1:10 S355J2G3



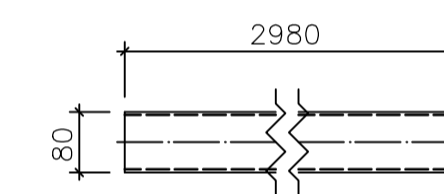
12x RHS80x4x500 **1007**
1:10 S355J2G3



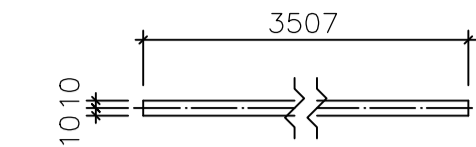
10x IPE220x4827 **1008**
1:10 S355J2G3



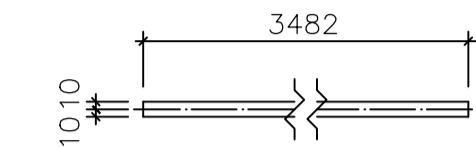
9x RHS80x4x2980 **1012**
1:10 S355J2G3



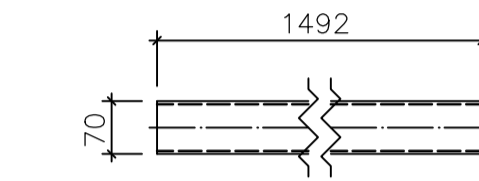
6x RD20x3507 **1013**
1:10 S355J2G3



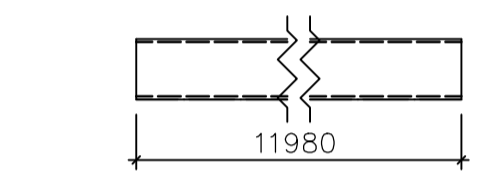
6x RD20x3482 **1014**
1:10 S355J2G3



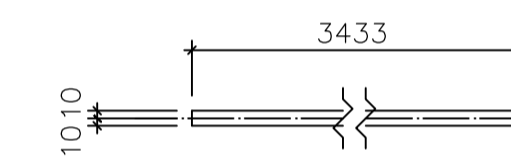
6x RHS70x4x1492 **1016**
1:10 S355J2G3



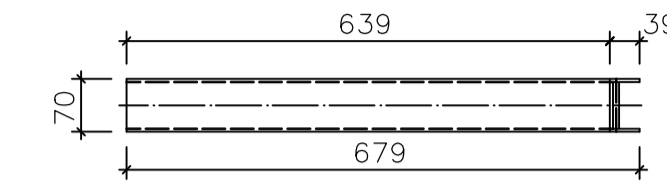
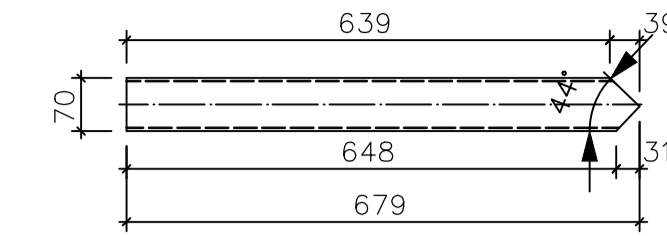
6x RHS80x4x11980 **1018**
1:10 S355J2G3



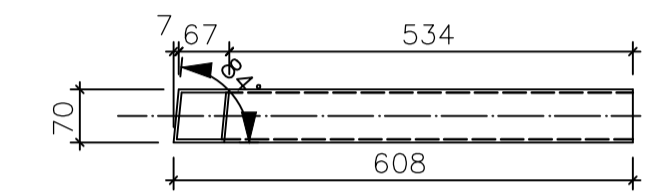
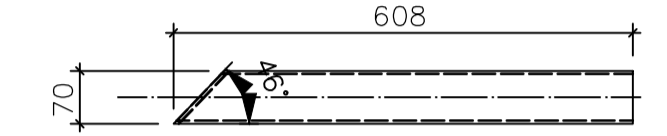
6x RD20x3433 **1015**
1:10 S355J2G3



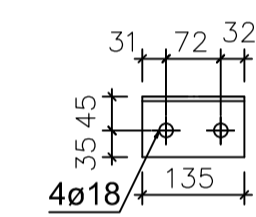
6x RHS70x4x679 **1017**
1:10 S355J2G3



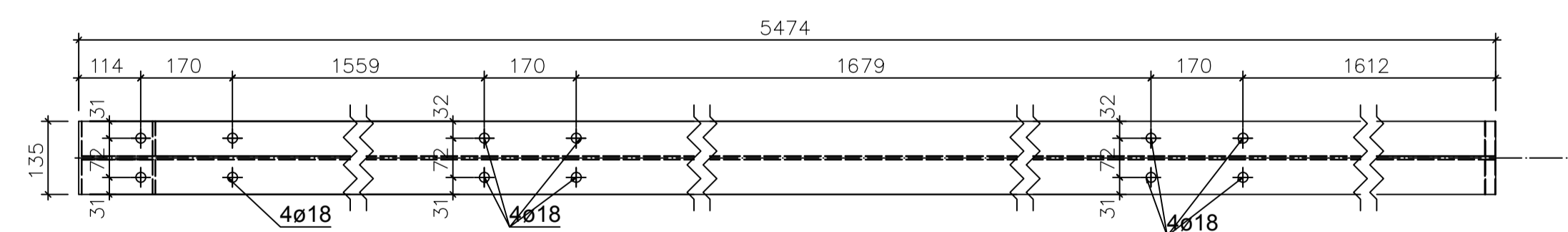
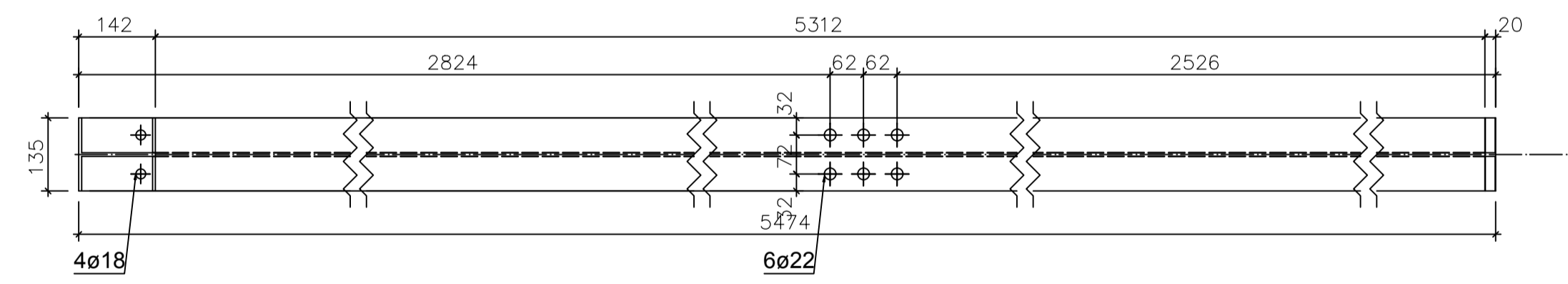
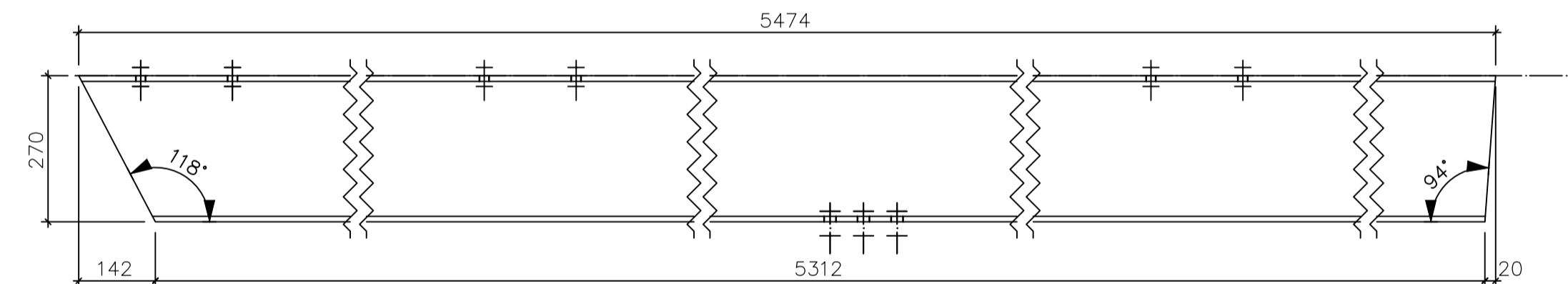
3x RHS70x4x608 **1019**
1:10 S355J2G3



2x L80X65X6x135 **1021**
1:10 S355J2G3



10x IPE270x5474 **1009**
1:10 S355J2G3



Pozycja	Ilość (szt.)	Nazwa	Długość (mm)	Materiał	Powłoka	Waga (kg/szt.)	Łączna waga (kg)
1000	72	L80X65X6	135	S355J2G3		0.89	64.15
1001	24	L80X65X6	63	S355J2G3		0.41	9.9
1002	24	L80X65X6	63	S355J2G3		0.41	9.9
1003	22	L80X65X6	135	S355J2G3		0.89	19.6
1004	18	RD20	500	S355J2G3		1.23	22.2
1005	18	RHS80x4	486	S355J2G3		4.58	82.36
1006	12	RHS80x4	11990	S355J2G3		112.83	1353.91
1007	12	RHS80x4	500	S355J2G3		4.71	56.46
1008	10	IPE220	4827	S355J2G3		126.48	1264.76
1009	10	IPE270	5474	S355J2G3		197.61	1976.1
1010	10	IPE270	885	S355J2G3		31.94	319.4
1011	10	IPE330	4673	S355J2G3		229.42	2294.25
1012	9	RHS80x4	2980	S355J2G3		28.04	252.38
1013	6	RD20	3507	S355J2G3		8.65	51.89
1014	6	RD20	3482	S355J2G3		8.59	51.52
1015	6	RD20	3433	S355J2G3		8.47	50.8
1016	6	RHS70x4	1492	S355J2G3		12.16	72.98
1017	6	RHS70x4	679	S355J2G3		5.53	33.19
1018	6	RHS80x4	11980	S355J2G3		112.73	676.39
1019	3	RHS70x4	608	S355J2G3		4.95	14.86
1020	3	RHS70x4	608	S355J2G3		4.95	14.86
1021	2	L80X65X6	135	S355J2G3		0.89	1.78
295							8693.63

PROKO-ART
inż. Sławomir Śliwka
49-305 Brzeg ul. księdza Makarskiego 33/ 15 tel. 602-597-155

Investor: GMINA LEWIN BRZESKI UL. RYNEK 1, 49-340 LEWIN BRZESKI

Temat: ZADASZENIE CZĘŚCI TRYBUN NA BOISKU SPORTOWYCH "OLIMPIA" W LEWINIE BRZESKIM- PROJEKT WYKONAWCZY KONSTRUKCJI

Adres: ul. Powstańców Śląskich, 49-340 Lewin Brzeski, dz. nr 205/48 Skala: 1:10 Data: 06.2018

Obiekt: Zadaszenie trybun- wiat

Projektant: mgr inż. Marcin Kajdas nr upr. OPL/0377/POK/08 Podpis: inż. Sławomir Śliwka nr upr. OPL/1300/POK/16 Opracowanie: Podpis: Nr rys: 25